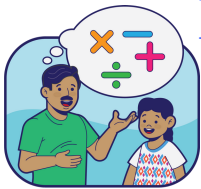


# TIJONİK PA IWOCHUCH

KA' OXI' TAQ NA'OJ KICHIN TE'EJ TATA'J  
RICHIN YEKITO' RI AK'WALA'

## TAK'UTU' ETAMAB'ALIL NAB'EY TAQ AJILANEM



Ronojel ri e k'o chinaqaj yalan yek'atzin richin etamab'alil ajilanem achi'el ri (läq, alaj täq ab'äj, ichaj, etz'ab'al, ronojel ri ek'o pa iwochoch). Kik'in re' chuxtäq re' yixtikir nibän ajilanik, niya' kiwi' chuqa' niwelesaj kiwi' ri ajilab'al, chuqa' yixtikir ye'ib'anala' pa jupuq chike'. Ri ruk'amon nab'ey nikib'an re etamab'al ajilanem ja ri te'ej tata'j chu qa' ri e nimalexela' richin ruk'utik chikiwäch ri ak'wala', k'a ri junam chi ixwonojel ye'ib'an kik'in ri ak'wala', pa ruk'isbäl pa kiyonil yekib'an ri ak'wala'. Re etamab'alil re' yixtikir ye'ib'an toq nimol iwi' chuchi' q'a'q, toq nib'an mesoj chuqa' toq nib'an ri ch'ajoj tzyäq, re xa ruwi' k'a ri etamanik ri'.

### KIXTZIJON

Yalan k'atzinel yixtzijon kik'in ri ak'wala' xa b'achike kijuna', chuqa' ri ak'awala' üt'z ta yetzjion kik'in ch'aqa chik winaqi'. Ketzijon awik'in rat chuqa' kik'in ch'aqa chik kachb'il, kik'in ch'aqa chik winaqi' ri ketaman kiwäch. Tatzijoj chike achike ri nab'an chi ri' pa jay achi'el: 'jare nk'wan wo'o' läq richin ri q'utun. Ja re nya' qa ruya'l ri q'utun, chuqa' tab'ij chike ri k'ak'a' taq tzij richin kan nkikusaj. Ruk'amon chi ke awak'axaj achike ri nkajo' nk'ib'ij toq yatzijon kik'in.



## RUSOLIK RI JALAJOJ TAQ K'AYEWAL



Tak'utuj chike ri ak'wala' achike ruk'amon nb'an richin nasol jun k'ayewal achi'el ri 'ri kaq'iq' yalan nujäq ruchi' ri jay'. ¿Achike ta ruk'amon nab'an richin nasol re k'ayewal re'? Jun chik k'ayewal 'k'o jun tiko'n ichaj yalan chaq'ij chik ¿Achike ta ruk'amon niqab'an richin neb'e utzir ta pe'? Ri k'ayewal natz'ijoj chike ri ak'wala' rik'in jub'a e qitzij chuqa' ri man e qitzij ta, ri ruk'amon ja ri ak'wal kan utz nub'an ri ch'ob'onik chuqa' nusol ri k'ayewal. Man ruk'amon ta ri xab'achike nkajo' nikib'an ri ak'awala', k'o chi tikinojij ri kik'aslem.

### RONOJEL RUK'UTUXIK

Tak'utuj chike ri ak'wala' xab'achike ri kan k'atzinel achi'el ta re: ¿Achike ruma yalan nkikot ri awana? . ¿Achike nub'an wakami toq xin ch'ol yan rij ri k'ix?, ¿Achike nub'an la ruxaq wuj wi niqaya' pa ya'? Yalan k'atzinel nab'an ri k'utunik chike ri ak'wala' wi e utz toq niqak'axaj ruk'ayewal. Tab'ij chike ri ak'wala' chi ruk'amon chuqa' nikib'an k'utunik. Tab'ij chike chi tikisoli'j ri k'utunik chikiwäch rije' achi'el re k'utunik re'. ¿Achike ruma xa chaqa' nel pe ri ik'? ¿Achike ruma nab'ij rat?



### TATZIJON OJER TAQ TZIJ



Tatzijoj chike ri ak'wala' ojer taq tzij chuqa' rije ruk'amon yekitzijoj ojer taq tzij chikiwäch, chuqa' chike ri ch'aqa chik kach'alal. Ri tzijonik ruk'amon ta ja re k'o chuwäch ri tzijob'al wuj chuqa' ri tzij ri yetzjiox chi ri pa itinamit. Wi pa iwochoch e manaq tzijob'al wuj, tiqaja' chi ri pa tijob'al chuqa' akuchi' yeqaj wi re wuj re', chuqa' tiqaja' kik'in ri ch'aqa chik iwach'alal rik'in jub'a e k'o re tzijob'al wuj re kik'in. Rik'in jub'a k'o jun celular iwik'in, ruk'amon nikanuj ri tijob'al wuj chupam, wawe' niwil k'iy tzijob'al wuj, niqasaj k'a ri nisik'ij. [worldreader.org](http://worldreader.org), [digitallibrary.io](http://digitallibrary.io) chuqa' re wawe' <https://bloomlibrary.org>.

### K'IY B'ANOB'ÄL KE'IB'ANALA'

Ke'aya' ri k'ayew taq na'oj chikiwäch ri ak'wala' richin yekichojmirisaj, achi'el ta re: jun yojtajnäq etz'ab'al, tikinuk'u' jun caja, tikichojmirisaj ri kik'ojlib'al ri etz'ab'al, tikichojmirisaj yakb'al taq etz'ab'al. Tab'ij chike chi ruk'amon nikitz'uk ri q'ojom, ri b'ixanik chuqa' ruk'amon ta yexajo', tikib'ana' q'ojom rik'in xab'achike chuxtäq nikil, tikib'ana' wachib'al chuqa' b'onil, re jalajoj taq samaj re' nk'asoj ri kijolom, chuqa' nikib'an chi k'iy yetik'ir nikitz'uk xab'achike, chuqa' yeruto' richin yekisol kiwäch k'iy samaj.

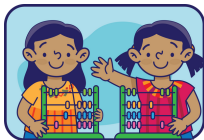


¿ACHIKE CHIKE RE SAMAJ RE' XTIB'ÄN WAKAMI PA IWOCHUCH?

# ¿ACHIKE RUMA' TIJONĪK PA IWOCHOCH?

KA' OXI' TAQ NA'OJ KICHIN TE'EJ TATA'AJ  
RICHIN YEKITO' RI AK'WALA'

## ¿ACHIKE RUMA' K'UTUNĪK RI ETAMAB'ALIL AJILANEM?



Ri k'utunĭk etamab'äl ajilab'äl chike ri e ko'ol ak'wala' yeruto' richin nketamaj ye'ajlan, nketamaj kiwäch ri ajilab'äl, yekinuk' chuxtäq, nikiya' kiwi' ajilab'äl chuqa' yekik'än kiwi'. Re b'anob'äl re man k'ayew ta nketamaj. K'iy samaj e b'anon chuqa' kilon chi ri ak'wala' ch'anin nketaman retamalil ajilanim chuqa' ri man k'ayew ta nketamaj nkisik'ij ruwäch wuj. Ri ajilaniĭk chuqa' ri naya' kiwi' ajilab'äl yek'atzin richin yeb'an ri samaj pa iwochoch chuqa' yek'atzin richin yeb'an juley taq samaj chik pa qak'aslem.

## ¿ACHIKE RUMA RI TZIJONĪK?

Ri tzijonem kik'in ri ak'wala' yeruto' richin nketamaj k'aka' taq tzij ke re' nim nub'an ri kich'ab'äl, chuqa' yeruto' richin nketamaj ri rusolik nab'an chike ri k'ayewal. Kik'in ri ak'wala' kab'ixan, tatz'ijoj ojer taq tzij, tasik'ij ruwäch wuj pa ich'ab'äl, tasolo'chikiwäch ri nab'an kik'in toq junan yixsamäj. Tanima' kik'ux richin tkitzijoj achike ri nkib'än richin nim nub'an ri kinojib'al, ke re kan xtawetamaj achike rub'anik nab'an richin ye'ato' toq nikil k'ayewal.



## ¿ACHIKE RUMA RI RUSOLIK K'AYEWAL?



Tanima' kik'ux ri akwala' richin nikisol k'ayewal, ja ri xkeruto' richin yech'ob'on chuqa' xkeruto' richin nkisol ri k'ayewal xtikil pa kik'aslem. Junan chi ixwonojel xtilos ri k'ayewal xtiwil pa iwochoch (ri tz'apab'äl jay xq'ate', ützt runuk'ik ri pa iwochoch, xyojtäj jun samajb'äl chuqa' ch'aaqa chik k'ayewalen), ke re', ri ak'wala' kan xtikina' chi yalan e k'atzinel chi ri' pa iwochoch.

## ¿ACHIKE RUMA' RONOJEL RUK'UTUXĪK?

Ke'ab'anala' k'utunĭk chike ri ak'wala' chuqa' tanima' kik'ux chi tkib'ana' k'utunĭk chikiwäch, ke re' nk'ase' ri kijolon, ja re nk'atzin richin nketamaj ronojel pa kik'aslem. Toq nak'utuj chike achike kib'anon, achike ri nb'angatäj pa jun k'ayewal, ja ri yalan k'atzinel richin kito'ik ützt kik'aslem ützt kinojib'al chuqa' yetikir nikiq'axaj ri k'ayewal.



## ¿ACHIKE RUMA' NATZIJJOJ OJER TAQ TZIJ?



Yalan yeruto' ri ak'wala' ri ojer taq tzij yetzijox chike, chuqa' ri e tz'ib'an chik richin nunimär ri kinojib'al chuqa' nketamaj ch'aaqa chik b'anob'äl, nketamaj achike nikib'än ri winaqi' juk'an chik tinamit. Ri tzijonĭk yeruto' richin nkisik'ij ruwäch wuj, nketmaja runuk'ik chuqa' niq'ax pa kijolom achike ri nuq'ajuj jun tzijonem. Ri nib'an sik'inĭk ruwäch wuj chuqa' ri tzijonem yerutun konojel ri ach'alalil.

## ¿ACHIKE RUMA KĪY B'ANOB'ÄL KE'IB'ANALA'?

Toq ri ak'wala' nkikusaj ri kijolom richin yech'ob'on ja ri taq yetikir yekitz'uk k'iy na'oj. Re tz'ukunĭk yekib'än ri ak'wala' yeruto' richin yech'on yetzijon richin nkib'än rusolik jun k'ayewal. Tab'ij chike ri awalk'wal chi tkib'ana xab'achike etz'anem richin yekikot. Chuqa' tab'ij chike chi tkitz'uku' xab'achike k'ayewal k'a ri tkisolo', ke re' nketamaj, nk'oje' kina'oj richin yekisol ri k'ayewal yekil pa kik'aslem; re' b'anob'äl re' ruk'amon yekib'än chi ri' pa iwochoch.



¡TIB'ANA' JUN RE SAMAJ RE' WAKAMI CHI RI' PA IWACHOCH!

# ETAMAB'ALIL AJILANEM PA IWOCHOCH

KAT' OXI' TAQ NA'OJ KICHIN TE'EJ TATA'AJ  
RICHIN YEKITO' RI AK'WALA'



## AJILANĪK

Kik'in ri awalk'wal, ke'iwajilaj achike chuxatāq ye'ukusāx toq ye'ib'ān q'utun, taq ye'ib'ān ri josq'in jay. Ke re chuqa', janipe paps ntzak qa, wi nikit'āt jun ruwāch che' tkib'ij janipe runaq' k'o, janipe che' ye'awil pa b'ey, janipe calcetines xech'aj , ke ri' ch'aqa chik. Nab'ey k'o chi ye'awajlaj ri chuxtāq chikiwāch ri ak'wala', k'a ri ye iwajlaj junan kik'in ri ak'wala', pa ruk'isb'āl kiyon ri ak'wala' ye'ajlan chawāch.

## RUNUK'IK

Tab'ij chike ri ak'wala' chi tkinuk'u' ri chuxtāq yekil pa jay chuqa ri ek'o chuchi' jay. Ri kinuk'ik ri chuxtāq ruk'amon yekib'ān ruma ri junan kib'anikil, junan kib'onil, e nima'q, e ch'utin. Achi'el re: ŷyatikir ye'anuk' ri e setesāq? ŷyatikir ye'anuk' ri junan kajtzaltemal kib'anik? (ke'ach'ara' ri taq ruq'a' che' e ch'utin, ri e nima'q kaqān) ŷjanipe xe'awil? ŷyatikir ye'awil ri kaq kib'onil' ŷjanipe kaq kib'onil xe'awil? "ke'amolo' ri chaq'ij ruxaq che' ye'awil". Wakami tab'ij chike ri ak'wala' chi tikiya' kan pa kik'ojlib'āl ri chuxtāq akuchi' xe kib'ek'ama pe.



## RUYA'IK RIWI' AJILAB'ĀL

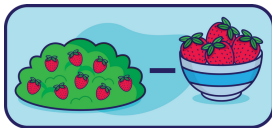
Kan tatz'eta' wi ri ak'wala' yetikir yekajlaj jun molaj chuxtāq. K'e ri, ta ya' jun ruwi' ri molaj k'a ri tab'ij chike ri ak'wala' chi tkajlaj chik. Achi'el ta re, wi rat k'o kaji' paps/is awk'in tab'ij chike ri ak'wala' chi tkajlaj chuqa' tkib'ij janipe k'o awik'in. K'a ri ta ya' qa jun chik pasp/is k'a ri tab'ij chik jun b'ey chike chi tkajlaj chik k'ari k'o chi nkib'ij chi wakami k'o wo'o' paps/is.

Ruk'amon nab'ij chike chi nya qa jun chik, k'a ri tkajlaj. Toq yalan ketaman chik, tak'utuj chike janipe xe'aya' qa'.

## K'AMOJ AJILAB'ĀL

Kan tatz'eta' wi ri ak'wala' yetikir yekajlaj jun molaj chuxtāq. Ke ri tak'ama el jun chuxtāq chire ri jupuq k'a ri tab'ij chike chi tkajlaj jun b'ey chik. Achi'el re, wi k'o wo'o' aranxax awik'in tab'ij chike ri ak'wala' chi tkajlaj k'a ri tak'utuj chike janipe aranxax k'o. Wakami tak'ama' el ka' aranxax k'a ri tkajlaj janipe xk'oje kan. Ri ak'wala' k'o chi xtikib'ij chi xk'oje' kan oxi' aranxax.

K'o ta xab'ij chike chi, xak'ām el ka' aranxax. Toq yalan ketaman chik, tak'utuj chike janipe chuxtāq xak'ām el.



## ETZ'ANĪK KIK'IN RI JALAJOJ KIB'ABANĪK



Tab'ij chike ri ak'wala' ke kinuk'u' ri chuxtāq kuma ri kib'anikil o ruma kaqān. Chuqa' ruk'amon chi ke kinuk'u' ri yetikir el nim k'a ko'ol kaqān. Tkikusas ri leme't, ruk'aj taq che' jalajoj kaqān chuqa' ŷtz tkikusaj ri yakb'āl taq kotz'ij, ch'uti'n taq ab'āj. Chuqa' ruk'amon tkitz'uku' jun cholajem kik'in ri ko'ol taq achib'āl (achi'el ta ke re: kajtzaltemal, setesik, oxtzaltemal, kajtzaltemal, setesik, oxtzaltemal...) Ri ak'wala' k'o chi ke kiqupij ri jalajoj kib'anikil achib'āl, tkikusaj ojer taq wuj, kixaq taq che' chuqa' ŷtz ke kib'ana' achib'āl pa ulew chuwayaj, ke re chuqa' nkisamajij ri rusolik kiwāch rik'in k'iq'a'.

¡TAB'ANA' JUN RE SAMAJ RE' WAKAMI CHI RI' PA IWACHOCHI!

# TZIJONEM PA IWOCHOCH

KA' OXI' TAQ NA'OJ KICHIN TE'EJ TATA'AJ  
RICHIN YEKITO' RI AK'WALA'

## TATZIJJOJ



Taq atk'o kik'in ri awalk'wala', tab'ana' rutz'ijoxik achike ri nikib'än (pa jay, pa k'ayb'äl, chuqa xab'a chike) tab'ana' achi'el ta ye'atz'ët ta pa televisión chuqa' achi'el ta natzijoj pa radio. Pa nab'ey man kan ta utz nana' po xa eqal nk'uluj el. Re samaj re kik'in ri ak'wala' nb'än chi nk'astěj ri kijolon chuqa' nuya' rucholajen ri konojib'al, nketamaj k'ak'a' taq ch'ab'äl chuqa kan yalan yetikir yech'ob'on jeb'el.

## TATZIJJOJ RONOJEL RI ANAB'AL

Chikikojol e k'iy winaqi' man nkitzijoj ta ri kinab'al ri ak'wala' chuqa' ri e nima'q taq winaqi'. Re tzijonik re nab'ey man kan ta utz nana' po xa eqal ri ak'wala' nketamaj nkil chuqa' nkib'ij ri nikina' (ri utz ri man kan ta utz) achi'el yekib'än ri kite' kitata'. Man k'ayew ta tikirib'a' el ke re "Yalan yikikot/jeb'el



nina'/yiququt/man utz ta yina' ruma: \_\_\_\_\_" Katz'inel chi nak'utuj chike ri awalk'wal achike nkina', kan achike nkina' pa jun k'ayewalen.

## TAK'UTUJ



Tak'utuj chike ri ak'wala' achike yekib'än, achike nkina', achike xkib'än chupam ri jun q'ij, achike xketamaj yan pa tijob'äl, chuqa' ch'aaq chik. Toq ja rije yek'utun chawe', kan eqal ke'awak'axaj k'a ri eqal tab'ij chike achike ri nkajo', tab'ij chike achik'e nib'ij rix. Achi'el ke re, Wi ri ak'wala' nkik'utuj "¿achike ruma ri kaj raxkaj rub'onil?, tab'ij chike "¿achike ruma nab'ij rat chi raxkaj ri rub'onil? Ke re' kan yalan nsamäj ri kijolon richin yech'ob'on jebe'l.

## TA NIMA' KIK'UX CHI TKIB'ANA' K'UTUNĪK

Tanima' kik'ux ri awalk'wal chi tkib'ana' k'utunik. Kere kan xkeruto' richin xtiketamaj pa kiyonil, chuqa' kan ronojel xtiketamaj, nuya' kuchuq'a' richin üt z kich'ob'onik chuqa' kan üt z xtikib'än chire ri kitzij. Wi kan xtikib'anala' ri k'utunik ri ak'wala' ja ri xkeruto' richin üt z xtkina' chuqa' kan yalan üt z xtikik'waj ki' kik'in rije', kik'in kitata', kik'in ri kimama', kik'in ri ch'aaq chik kach'alal. Pa jun ach'alalil, konojel yetikir ta nkitzolij jun k'utunik chuqa nkib'än ri k'utunik chikiwäch ri yalan e ko'ol.



## TANIMA KIK'UX RICHIN KETZIJON KIK'IN CHA'QA CHIK



Ri tzijonik chikiwäch ri ak'wala' chikiwäch k'acha'lal chuqa' man kach'alal ta ki', yalan k'atzinel achi'el ri tzijonik rik'in ri kite' kitata'. Tanima' kik'ux ri awalk'wal chi ketzijon kik'in ri ch'aaq chik kach'alal ch'aaq chik ak'wala' kik'in ri achulk'jay, chuqa' ch'aaq chik winaqi' richin nketamaj ri rub'anik yech'on yetzijon kik'in ri winaqi' chuqa ch'aaq chik.

¿ACHIKE CHIKE RE B'ANOB'ÄL RE XTIB'ÄN WAKAMI PA IWOCHOCH?

# RUSOLĪK RI JALAJOJ TAQ K'AYEWAL PA IWOCHOCH

KAT' OXI' TAQ NA'OJ KICHIN TE'EJ TATA'AJ RICHIN YEKITO' RI AK'WALA'



## TISOLO' JUN RUK'AYEWAL

Toq tikirel, tak'utuj chike ri awalk'wal chi tkisolo' jun ruk'ayewal pa kiyonil. Achi'el ri, wi k'o jun k'ayewal chikikojol ri kach'alal ki', tak'utuj chike achike ta rub'anĭk nkib'ān richin nkiſol re k'ayewal re'. Chuqa' ruk'amon nab'ij chike ri ak'wala' chi tkisolo' jun k'ayewal ri nkik'ulwachik pa jay achi'el ta, "ri ruchi" jay yalan niq'ajan" chuqa' "achi'el ta jun mexa' yalan nsilon". Ke re yeruto' ri kinojib'al ri ak'wala' richin yekisoli ri k'ayewal toq yekito ri kite' kitata' pa kisamaj.

## TKINUK'U' JUN ROMPECABEZAS

Wi k'o jun rompecabezas iwĳ'in, ruk'amon ta chi ninuk' junan kik'in ri ak'wala'. Tatz'eta' jeb'el chi re etz'anen re' nub'ij ri kijuna' ri ak'wala' ruk'amon nkinuk'. Ruma wi kan yalan k'ayew nub'ān chikiwāch numalo' kik'ux chuqa' man xtikajo' ta xtiĳinuk' jun b'ey chik. Win manaq jun rompecabezas awik'in, tak'utuj chi ri' pa biblioteca, chuqa' nawil chi ri pa tijob'al chuqa' rik'in jub'a kik'in ri winaqi' e k'o chinaqaj nikiqēj jun chiwe'. Rat chuqa' ruk'amon ta nab'ān jun rompecabezas rik'in ri pim wuj chuqa' kik'in ch'aqa chik chuxtāq e k'o keteq ri'.



## K'IY ETZ'ANEN KIXETZ'AN



E k'o k'iy etz'anen ke re kib'i': Basta, Totito ke ri chuqa' ch'aqa chik, richin yeb'an re etz'anen re' yek'atzin jun ruxaq wuj chuqa' jun tz'ib'ab'āl. K'o jun ri etz'anen rub'i' "Ya' chuqa' Ulew", wawe' xa xe yatzopin chawāch chawij. Ruk'amon man kayew ta nab'ān chike ri etz'anen kichin ri e ko'ol taq ak'wala' achi'el re, tak'utuj: k'o jun Ab'āj, Wuj, Tijera, awik'in tawila' achike xtawelesaj pe. Yalan yeruto' ri ak'wala' ri etz'anen, nk'ut ri rub'eyal chikiwāch chuqa' nb'ān chike chi yech'ob'on chuqa' nikit'zuk ch'aqa chik na'oj.

## KE'AB'ANALA' K'UTUNIK PA RUWI' RI ETZ'ANEM

Tab'ana' k'utunik chike ri ak'wala' toq yetajin ye'etz'an achi'el re:  
 ¿Achike ruma xtzāq la jun nim raqān jay?  
 Wi xtiqab'ān jun b'ey chĳk, ¿Achike ta xtiqab'ān chire' richin man ta chik xtiqāq?  
 ¿Tikirel nqab'ān ūtz chire' richin man xtiqāq ta?  
 ¿Kan ūtz xqab'ān chire' wakami? Wi man ūtz ta xb'ān, wakami nqakanuj chik jun rub'anikil richin yalan ūtz xtub'ān.



## TAB'ANA' K'UTUNIK TOQ RI AK'WALA' NKISIK'IJ WUJ

Tab'ana' k'utunik chike ri ak'wala' pa ruwi' ri nkisik'ij chuqa' pa ruwi' ri tzijonĭk nkak'axaj ke ri' kan niq'ax pa kijolom re tzijonem achi'el ke re:  
 ¿Achike ruma' nab'ij chi ri ti imul ke re xb'ān?  
 ¿Kan yalan kami nkikot ri rachb'il? ¿achike ruma?  
 ¿Achike ta nab'ān wi rat at imul?  
 Wi ri ti imul xb'e ta pa q'ayis man ta xq'ax pa raqān ya', ¿achike ta xk'ulwachij?

¡TAB'ANA' JUN RE SAMAJ RE' WAKAMI CHI RI' PA IWACHOCH!

# JALAJOJ B'ANOB'ĀL PA IWOCHOCH

KAI' OXI' TAQ NA'OJ KICHIN TE'EJ TATA'AJ RICHIN YEKITO' RI AK'WALA'

## KE'AB'ANALA' K'UTUNĪK



Ri k'utunĭk yeruto' ri awalk'wal richin xab'achike nkajo' nketamaj. Tak'utuj chike achike yalan nkajo' chuqa' achike yalan nkajo' ta. Tak'utuj chike, achike kib'anon, achike xkib'an ri jun q'ij. Ūtz tab'ana k'utunĭk ri k'iy rutzoloxĭk nkib'an achi'el ta re. ŷachike ruma ri q'aq' yalan k'atān'? chuqa' ŷakuchi' yeb'e wi ri sanik ri tokoq'a'? Re k'utunĭk re yeruto' richin nk'iyir ri kinobjib'āl chuqa kan yalan ūtz yech'ob'on.

## KAN TAB'ANA CHI KEB'AN RI K'UTUNĪK

Tanima' kik'ux ri ak'wala' richin xab'achike nketamaj. Tab'ij chike chi tkib'ana' k'utunĭk, re yeruto' richin nketamaj pa kiyoniil. Xab'achike b'anob'āl yekib'ān, ruk'amon chi tkib'ana' ri k'utunĭk. Achiel re', toq nkib'ān ri wa'in, kik'in konojel kach'alal kimolon ki', ruk'amon nab'ij chike ri ak'wala e ko'ol chi tkik'utuj chike ri ch'aqa chik kach'alal. 'Tatzijoj chwe ŷachike xab'ān ri jun q'ij wakami'? Taq at k'o chuchi' q'aq', ruk'amon ta nab'ij 'Ntzek qa kināq' ŷachike ta nawetamaj pa ruwi' ri kināq'? ŷAwetaman akuchi yek'ase wi ri kināq'?



## TAB'ANA' K'UTUNĪK TAQ YIXTAJIN NIB'AN SAMAJ PA IWOCHOCH



Tab'ij chike ri awalk'wal chi tkib'ana chuqa' ri samaj yeb'an pa jay achi'el re, nab'ān q'utun, josq'inĭk, chuqa' kichajinĭk ri ch'utin ak'wala'. Taq yekib'ān re samaj re' ruk'amon nab'ān re k'utunĭk re' ŷachike ruma malon nb'e roqo' pe ri ya'? , ŷachike ruma nb'oqo la xab'on?', ŷachike ruma noq' ri alaj ak'wal?', ŷachike nrajo' nb'ij toq noq' jun ak'wal'?

## TAB'ANA' K'UTUNĪK TAQ YE'ETZ'AN

Tanima' kik'ux ri ak'wala' rik'in ri k'utunĭk nab'ij chike taq riye' yetajin ye'etz'an. Achi'el re:  
 ŷachike ri niwetz'ab'ej'? ŷachike rub'anĭk re etz'anen re'?  
 ŷachike xcha'kon chire re anin xib'ān?  
 ŷachike ta nab'ān chi rat yach'akon pa jun anin?  
 ŷKan xakikot xab'ān re etz'anen?  
 ŷachike ta ch'aqa chik etz'anen nab'ān akuchi nab'ān anin?  
 ŷYakikot nab'ān ri anin? ŷachike ch'aqa chik b'anob'āl nabān chi yakikot?



## TAB'ANA K'UTUNĪK TAQ NB'AN RI TZIJONĪK



Kan ti mayo ak'ux taq natzijoj jun tzijonĭk chike ri awalk'wal, ke'ab'anala' k'utunĭk pa ruwi' ri natzijoj richin ke ri' ri ak'wala' nq'ax pa kijolon achike ri natzijoj. Achi'el re:  
 Taq natz'ēt ruwāch jun tzijob'āl wuj tak'utuj: ŷachike tzijonĭk nb'ij chiqe re wuj re'?  
 ŷachike xteqetamaj chupam re jun tzijonĭk re'?  
 ŷachike xtib'ana'tāj chirij re tzijonĭk re'?  
 Ri wināq n'tzijox chupam re tzijonĭk ŷachike ta nk'ulwachitāj wi nujāl ri rub'anob'al'?

TAB'ANA' JUN RE SAMAJ RE' WAKAMI CHI RI' PA IWACHOCHI!

# RUTZIJONEM RI TZIJONİK PA IWOCHOCH

KA' OXI' TAQ NA'OJ KICHIN TE'EJ TATA'AJ  
RICHIN YEKITO' RI AK'WALA'

## TIB'ANA TZIJONİK



Tatzijoj ojer taq tzij chike ri awalk'wal, k'a ri tab'ij chike chi tkitzijoj chik rije' chawe rat, chuqa' chike ri ch'aaq chik kach'alal. Ri tzijonik ruk'amon ta ri ojer taq tzij, ri e k'ulwachin chikojol rix, ri tzijonik ketaman ri ojer taq winaqi'. Chuqa' tzijonik e t'ukun pe. Man k'ayew ta tab'ana chire ri tzijonem richin nq'ax pa kijolon ri ak'wala'. Ruk'amon taya' ruwi' ri atzijonik, tab'ana' chi kan tiqa chikiwäch ri ak'wala' chuqa' ruk'amon naya' ruq'ojomal. Takamluj rutzijonik pa jun q'ij chuqa' pa jun semana richin ke ri' ri ak'wala' kan k'o xtiketamaj.

## TKISIK'IJ CHUQA' TKITZIB'AJ RI TZIJONİK

Tatzijoj jeb'el taq tzijonik chike ri ak'wala', chuqa' tab'ij chike chi tkitz'ib'aj kitzijonik. Wi manaq q'ij chawe' richin nab'an ri tzijonik, tak'utu utzil chire ri nimalaxel chuqa' jun xtän nim chik, richin nb'an ri sik'inik kik'in ri ak'wala'. Win man jun tzijob'al wuj k'o pa iwochoch, tiqaja' jun chi ri' pa tijob'al chuqa' ruk'amon ta chi niqajala' chiwäch rix kik'in ri iwach'alal. Wi k'o jun a ayonib'al, (teléfono), ruk'amon ta nakanoj yalan k'iy wuj e k'o pa internet ri man natoj ta chutz'etik, ye'awil achi'el re wawe' worldreader.org, digitallibrary.io o



<https://bloomlibrary.org>.

## TIB'ANA K'UTUNİK TAQ NIB'AN RI TZIJONİK



Taq nab'an k'utunik (nab'ij, chuqa' wi natz'ib'aj), pa ruwi' jun tzijonik, yeruto' ri ak'wala' richin nk'iyër ri kinajib'al chuqa kan nq'ax pa kijolon. Achi'el re:  
¿Achike ruma ke re' xb'an ri wakax?  
Kan yalan nkikot ri rachalalil ¿achike ruma?  
¿Achike ta nab'an wi rat ta at wakx?  
Wi ri kej, xtzijox, xb'e ta chwa juyu' man ta xb'e pa raqän ya'. ¿achike ta xb'angatä j nab'ij rat?

## TIB'ANA B'IXANEM

Nab'an b'ixanik ja ri yalan nk'asës rub'eyal jun tzijob'elil pa iwochoch.. Ri b'ixanik ja nk'awomaj chi ri ak'awala' yekitz'uk ronojel na'oj chuqa' yeruto', richin nketamaj nkib'an b'ixanik chuqa' yerutijoj richin nketamaj ri nuk'ulen cholajen. Takanuj ri b'ix ri man e k'ayew ta nawetamaj. Taya' rub'anik ri jun b'ix rik'in ronojel a ch'akul k'a ri tak'utu' chikiwäch ri ak'wala' k'a ri tib'ana' ri b'ixanik. Tab'ixaj ri b'ix rik'in ronojel ri silonik yatikir richin ke ri' ri ak'wala' ronojel kik'ux xtikib'ixaj chi' ekonojel. Tikamluj ri b'ix b'inaqil, richin ke ri' kan xtiketamaj nkib'ixaj ri ak'wala'. Ke'ak'utu' ri chuxtäq yeb'ixex chupam ri b'ix ke ri xtiketamaj k'ak'a ch'ab'al ri ak'wala'.



## KE'IB'ANALA' RI E K'O CHUPAM JUN TZIJONİK

Kik'in ri ak'wala' ruk'amon yeib'an ri yetzijox pa jun tzijonik. Ri b'anob'al ye'ib'an kik'in ri ak'wala' toq nib'an ri b'ixanik nuya' üt z kinajib'al richin xtikikusaj, chuqa' kan ja rije' e k'o chupam ri jun tzijonik, ke re' kan xtikito' ki'. Re samaj re' man kan ta k'o chi ri te'ej tata'j yekekitzu' ri ak'wala'.

¿ACHIKE CHIKE RE B'ANOB'ÄL RE' XTIB'ÄN WAKAMI PA IWOCHOCH?

# TZ'UKUNİK PA IWOCHOCH

KA'I OXI' TAQ NA'OJ KICHIN TE'EJ TATA'AJ  
RICHIN YEKITO' RI AK'WALA'

## KE'IB'ANA' TZ'UKUNİK



Man kan ta k'atzinel ri jeb'el nuk'ulen taq etz'ab'al e k'o iw'k'in richin ye'ib'än tz'ukunik kik'in ri ak'wala'. Ruk'amon ye'itz'uk b'anob'äl kik'in ri ye'iwil ke teq ri'. Achi'el re, jun nim raqän jay nab'än rik'in ruk'aj che', kik'in ab'äj, chuqa ruk'amon yeb'än nima'q jay kik'in ri botella, chuqa ri vaso, chuqa ruk'amon nikusaj pim taq wuj richin ye'ib'än ri jay. Ri ye'akusaj xab'achike chuxtäq e k'o pa iwochoch ja ri kan yalan jeb'el ruma nuya' ruchuq'a' ri inojib'al. Ruk'amon chi nib'än jun achib'äl chuwäch jun wuj ri jay ye'ib'anala' chi ixwonojel, k'a ri nijunamaj kik'in ri xe'ib'anala'.

## KEICHOJMISAJ CHUQA' KE'ISOLO'

Ye'ichojmirisaj chuxtäq pa iwochoch ja ri kan yalan üt'z samaj richin ri ak'wala' nkikusaj ronojel ri ketamab'al ke re kan xketikir xtikisol ronojel k'ayewal. Tab'ij chike ri ak'wala' chi pa kiyonil tkisolo' jun ruk'ayewal, mani kan ja rat nasolo'. Achi'el ta re', wi jun ruchi' jay yalan nujaqatäj achike ta rusolik nkib'än ri ak'wala', yetikir nkisol re k'ayewal re'. Re samaj re' yeruto' richin nketamaj ri ak'wala' chuqa' k'atzinel chike ri te'ej tata'aj.



## TIB'ANA' JEB'EL TAQ WACHB'ÄL

Kik'in ri awalk'wal ruk'amon ye'ib'än jeb'el taq wachib'äl kik'in xab'achike chuxtäq ye'iwil ke ri' pa iwochoch, achi'el ri kixaq che', ruk'aj taq che', kinäq', ixim, kixaq ojer wuj, chuqa' ri ojer taq yakb'äl. Ri jeb'el taq wachib'äl nub'än chi ri ak'wala' janila jeb'el yenojin, yech'ob'on chuqa' kan üt'z tkikusaj ri kiq'a' ronojel kich'akul.

## KE'IB'ANA' JEB'EL TAQ B'ANOB'ÄL

Taq ri ak'wala' k'iy b'anob'äl yekib'än, nkisamajj ri kinojib'al chuqa' kan nk'asës ri kib'anob'al, chuqa' ri ronel ta samaj yekib'än nk'atzin richin nketamaj. Taq nkib'än ri rub'anob'al jun chik winäq ja ri nketamaj achike kib'anikil ri winaqi', chuqa' nketamaj nkito' ki', chuqa' nketamaj yesilon. Ruk'amon ta natz'ijoj jun tzijoniik chike richin ri je' nkib'än ruwachib'äl achike nb'ij ri tzijoniik, chuqa' ri je' ruk'amon tkitz'uku' jun tzijoniik.

Ri ak'awala' yalan nqa chikiwäch yekikusaj k'iy chuxtäq, ke'ato' chi yekib'än re chuxtäq re' achi'el paw'aj, tzyäq, su't, xajab' kitzyaq ri ch'aqa chi kach'alal.



## KEXAJO' KEB'IXAN

Tab'ik chike ri awalk'wal chi tkitz'ib'aj jun b'ix chuqa' tkitz'uku' jun xajoniik. Rik'in ri b'ixanik chuqa' ri xajoniik nketamaj, achike ri nab'al chuqa' yeruto' taq nkil k'ayewal. Re b'ixanik chuqa' re xajoniik yeruto' ri ak'wala' richin jeb'el yech'on chuqa' yenojin. Re b'anob'äl re' xa jub'a' ok kitz'et'ik nkajo' ri ak'wala' kuma ri te'ej tata'aj, chuqa' man nikina ta ri ramaj.

¿ACHIKE CHIKE RE B'ANOB'ÄL RE' XTIB'ÄN WAKAMI PA IWOCHOCH?